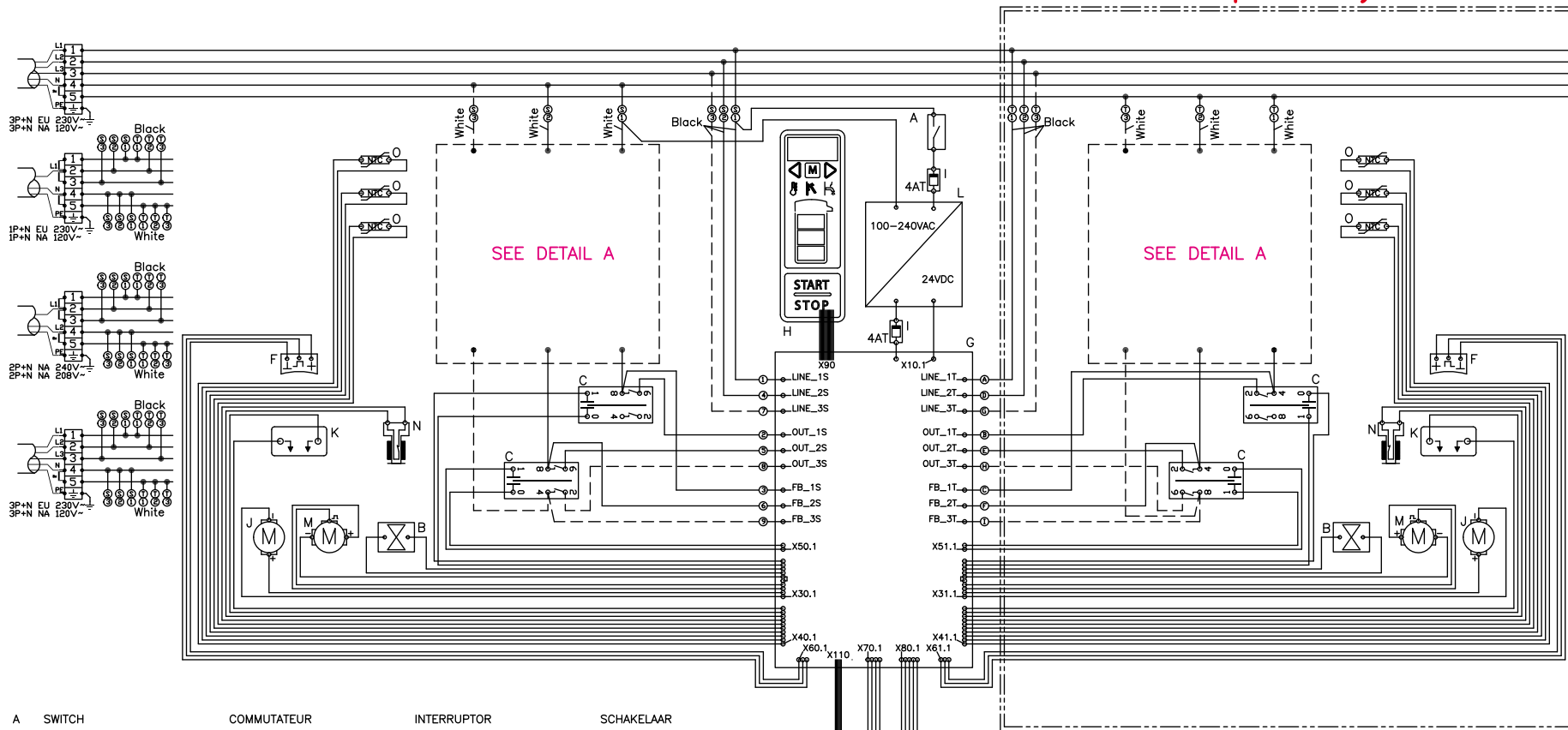


Thermal Brewer Aurora

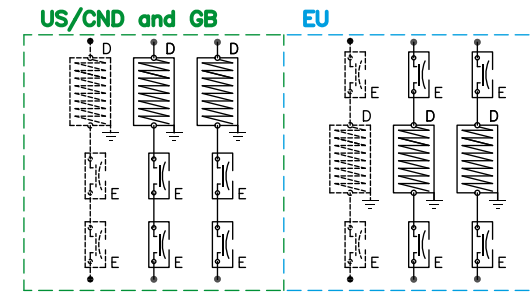
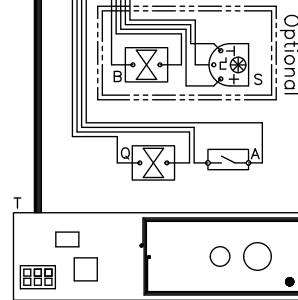
Single High / Twin High / Single Low / Twin Low

700.406.741 A

Twin operation only



- | | | | |
|---------------------------|-------------------------|-------------------------|----------------------|
| A SWITCH | COMMUTATEUR | INTERRUPTOR | SCHAKELAAR |
| B MAGNETIC VALVE | VANNE MAGNETIQUE | VALVULA ELECTRONICA | MAGNEETVENTIEL |
| C RELAY | RELAIS | RELÉ | RELAIS |
| D ELEMENT | ELEMENT | RESISTENCIA | ELEMENT |
| E HIGH TEMPERATURE SAFETY | THERMOSTAT DE SECURITE | TERMOSTATO DE SEGURIDAD | DROOGKOOKBEVEILIGING |
| F HALL SENSOR | CAPTEUR HALL | SENSOR HALL | HALL SENSOR |
| G PRINT | CIRCUIT IMPRIME | CIRCUITO ELECTRÓNICO | PRINT |
| H KEYBOARD/DISPLAY | KEYBOARD/DISPLAY | PLACA TECLADO/DISPLAY | KEYBOARD/DISPLAY |
| I FUSE | FUSIBLE | FUSIBLE | ZEKERING |
| J MOTOR | MOTEUR | MÁQUINA | MOTOR |
| K WATER SPREADER | ARROSEUR | ESPARCIDOR DE AGUA | SPROEIKOP |
| L POWER SUPPLY | ALIMENTATION EN ENERGIE | SUMINISTRO DE ENERGIA | VOEDING |
| M PUMP | POMPE | BOMBA | POMP |
| N LEVEL SWITCH | COMMUTATEUR DE NIVEAU | INTERRUPTOR DE NIVEL | NIVEAU SCHAKELAAR |
| O TEMPERATURE SENSOR | TENTACULE | SENSOR DE TEMPERATURA | TEMPERATUURSSENSOR |
| P SWITCH | COMMUTATEUR | INTERRUPTOR | SCHAKELAAR |
| Q MAGNETIC VALVE | VANNE MAGNETIQUE | VALVULA ELECTRONICA | MAGNEETVENTIEL |
| R CONNECTION BLOCK | CONNECTEUR ELECTRIQUE | REGLATA DE CONEXIÓN | AANSLUITSTRIP |
| S FLOWMETER | CAUDALIMÈTRE | CAUDALIMETRO | FLOWMETER |
| T RFID | RFID | RFID | RFID |



DETAIL A